

“I can see!”

At last. PowerPoint™ as it's meant to be seen.

Graphics, animation and interactivity in a PowerPoint presentation are critical to conveying its full meaning.

The process of receiving, converting and playing a PowerPoint e-mail attachment using Impatica for BlackBerry Enterprise Server (BES) takes only seconds and is seamless. The software itself consists of two components: the Impatica for BES Server Software that runs on a server with or separate from the BlackBerry Enterprise Server, and the Impatica Attachment Handler that runs on each BlackBerry handheld where PowerPoint attachment viewing is desired.

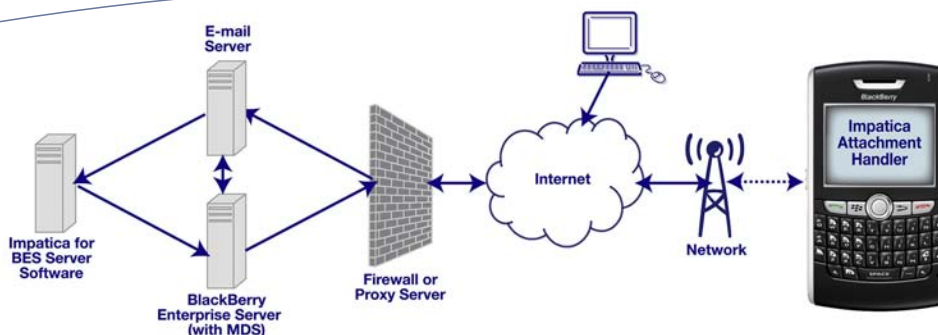
Here's what happens in the background:

- An e-mail is sent with a PowerPoint attachment and arrives at the enterprise e-mail server.
- The BES routes the message, with a notification of the PowerPoint attachment, to the BlackBerry.
- The user receives and opens the message, clicks

on the attached PowerPoint file name and selects “View Attachment”.

- The Impatica Attachment Handler sends a conversion request back to the server.
- The Impatica for BES Server Software receives the request through its assigned e-mail account. It then retrieves the PowerPoint attachment and begins the conversion process.
- As converted content becomes available, it is delivered via MDS push to the BlackBerry.
- The Impatica Attachment Handler begins to play the presentation on the BlackBerry handheld as the content is received.

Pair Impatica for BES with Impatica ShowMate, the tiny device that projects PowerPoint from your BlackBerry, and you have the ultimate mobile presentation solution!



Product Features

Impatica for BlackBerry Enterprise Server provides high fidelity conversion and playback of PowerPoint presentations (version 97 and later) including formatted text, graphics, shapes, charts, tables, WordArt, transparency, animation effects, slide transitions and hyperlinks to slides and URLs. Impatica for BlackBerry Enterprise Server can even be used with Impatica ShowMate so presentations received by e-mail can be projected from the BlackBerry. In addition, Impatica for BlackBerry Enterprise Server features the following capabilities:

Server:

- Administration Utility software for configuration, monitoring and control
- Administrator configuration of maximum local handheld cache size for presentations
- Cache for converted presentations to optimize multiple viewing of presentations
- Activity logs with viewing in the Administration Utility

Handheld:

- Seamless integration with BlackBerry message viewing
- Presentation navigation via playback control menu and key strokes
- Zooming and panning
- Local presentation cache and save for quick review of recently viewed presentations
- Compatibility with Impatica ShowMate for projecting presentations

Installation Overview

Impatica for BlackBerry Enterprise Server is installed within the existing enterprise architecture, thereby maintaining the security of the data transmitted. The following steps are required for installation:

Setup:

- Create an e-mail account dedicated to Impatica for BES, accessible by IMAP (for all e-mail servers), OWA (for Microsoft Exchange 2000 or later) or DIIOP (for IBM Lotus Domino®)
- Ensure the BES is configured as an MDS push server

Server:

- Run the Impatica for BES installation wizard
- Use the Administration Utility to specify registration information, e-mail settings, BES identification and system options
- Use the Administration Utility to start the Impatica for BES services

Handheld:

- Install the Impatica Attachment Handler software on each BlackBerry handheld either by USB, over-the-air automatically through the BES, or over-the-air from a web site

Support and Upgrade Policy

Support:

- Technical support via toll-free telephone number and e-mail
- Technical support is provided free of charge for a period of 1 year after purchase; additional support is available for a fee
- Online FAQs, tutorials, user's guide
- Comprehensive manuals

Upgrades:

- Updates and maintenance releases are free for licensed users
- Upgrades are included in the additional support package

System Requirements

Server:

- Pentium 4 or later
- 1 GB of RAM
- Microsoft Windows 2000 or later
- BlackBerry Enterprise Server 4.0 on same or separate server

Handheld:

- Java-based BlackBerry Handheld
- BlackBerry Software 3.8 or later

Java is a trademark of Sun Microsystems, Inc. PowerPoint, Microsoft, Windows, and the Windows logo are trademarks, or registered trademarks of Microsoft Corporation in the United States and/or other countries. The RIM and BlackBerry families of related marks, images and symbols are the exclusive properties of and trademarks or registered trademarks of Research In Motion Limited – used by permission. Printed in Canada. January 2009



200-2430 DON REID DRIVE | OTTAWA ON CANADA K1H 1E1
TEL: 613.736.9982 | 800.548.3475 | FAX: 613.736.9084 | WWW.IMPATICA.COM